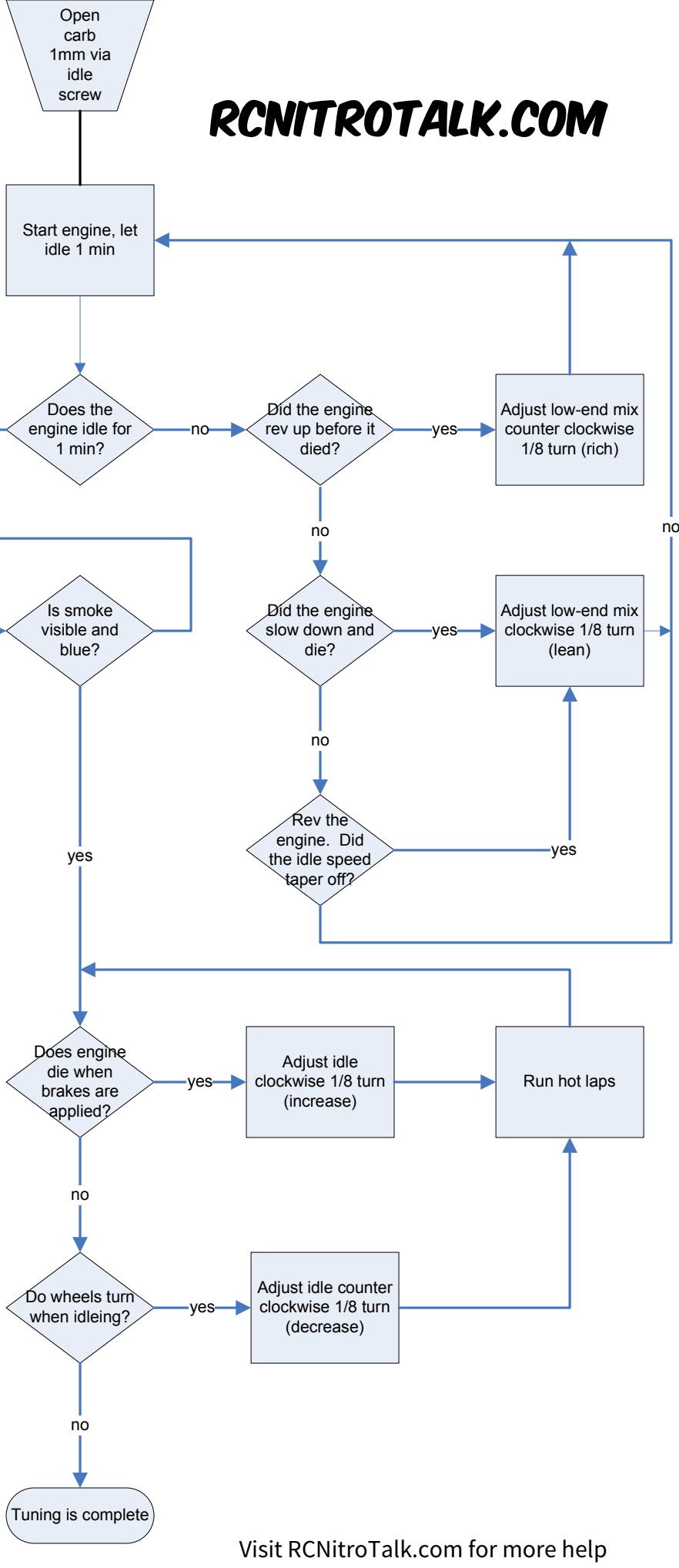


# RC Nitro Troubleshooting Tuning Flowchart

**RCNITROTALK.COM**

This flowchart is based on several factors :

- 1) The motor is set to factory specs
- 2) The motor is warm, including the chassis
- 3) All parts are in working order
- 4) Carb is initially set to 1mm
- 5) Idle increases with clockwise rotation
- 6) Low and high-end mix richen with counter clockwise rotation



Temps will vary by  
manufacture

Visit [RCNitroTalk.com](http://RCNitroTalk.com) for more help